



Education First

Educational Tours

9 or 11 days | Ireland | Wales | England | Extension to France

ENGLAND, IRELAND & WALES



Blarney Castle

ENGLAND, IRELAND & WALES

The cities of the British Isles can take you back into the distant past, from Dublin's thousand-year-old Book of Kells to the 17th-century St. Paul's Cathedral in London. In between, appreciate the timeless beauty of nature—marvel at the landscapes of Snowdonia Park in North Wales, the green hills along the Ring of Kerry in Ireland and England's pastoral countryside.



Changing of the Guards

Day 1: Fly overnight to Ireland

Day 2: Shannon | Killarney

- Meet your Tour Director at the airport
- Travel to Killarney

Day 3: Killarney

- Take an excursion to the Ring of Kerry
- Visit the Bog Museum

Day 4: Killarney | Dublin

- Visit Blarney Castle
- See Cashel Rock
- Travel to Dublin

Day 5: Dublin

- Take an expertly guided tour of Dublin: Georgian squares; O'Connell Street
- See the Book of Kells at Trinity College
- Visit St. Patrick's Cathedral

Day 6: Dublin | North Wales

- Cross the Irish Sea by ferry from Dublin to Holyhead
- Visit a Welsh castle
- Travel through Snowdonia

Day 7: Stratford | Oxford | London

- Take a tour of Stratford
- Visit Shakespeare's birthplace
- Visit the gardens at Anne Hathaway's cottage
- Take a tour of Oxford
- Travel to London

Day 8: London

- Take an expertly guided tour of London: Big Ben and Houses of Parliament; Piccadilly Circus; St. Paul's Cathedral; Changing of the Guard at Buckingham Palace (if scheduled)
- Time to explore on your own or
- Visit Windsor Castle
- Enjoy an authentic fish and chips dinner

Day 9: Depart for home

✦ 2-DAY TOUR EXTENSION

Days 9-10: Paris

- Experience a Eurostar train
- Take an expertly guided tour of Paris: Place de la Concorde; Champs-Élysées; Arc de Triomphe; Les Invalides; Eiffel Tower
- Visit the Louvre
- Take a walking tour of Paris: Latin Quarter
- Visit Notre Dame Cathedral

Day 11: Depart for home

Everything you get:

- Round-trip flights on major carriers
- Full-time Tour Director
- Comfortable motorcoach; Ferry; Eurostar high-speed train with extension
- 7 overnight stays in hotels with private bathrooms (9 with extension)
- European breakfast and dinner daily (lunch instead of dinner on Day 7)
- 2 sightseeing tours led by expert, licensed local guides (3 with extension); 3 sightseeing tours led by your Tour Director; 1 walking tour with extension



Entrances

Bog Museum; Blarney Castle; Book of Kells at Trinity College; St. Patrick's Cathedral; Welsh castle; Shakespeare's birthplace; Gardens at Anne Hathaway's cottage; *With extension:* Louvre; Notre Dame Cathedral

✦ **Customize this tour** by adding excursions or extending your experience by a few days.

Ring of Kerry

Traverse the Ring of Kerry and encounter Ireland's famed mystical beauty. This stunning, 112-mile coastal route wraps around the Iveragh Peninsula. Here you can experience everything from the Old Monastery to unspoiled beaches to Killarney National Park. On your visit, make your way along lush rolling hills and take in magnificent views of the Atlantic Ocean and the placid Lakes of Killarney. You'll also pass by the misty peaks of Macgillycuddy's Reeks. This range reaches its zenith at Carrauntoohil, Ireland's tallest mountain. In Glenbeigh, visit the Bog Village. Wander through a re-creation of an Irish village from the early 1800s as costumed guides demonstrate the way of life that prevailed in 19th-century rural Ireland.



Seascape | Ring of Kerry, Ireland



Riverside buildings | Dublin, Ireland

Dublin

Experience Ireland's capital, scenically situated between Dun Laoghaire (pronounced "dun leery") and Howth Head's rocky peaks. On your sightseeing tour, you'll pass by Phoenix Park and the presidential residence. Continue to bustling O'Connell Street. Playwright Samuel Beckett and satirist Jonathan Swift studied at Trinity College, your next stop. In the Long Room of the Old Library you'll view the Book of Kells. Irish monks created this calligraphic manuscript over 1,000 years ago. Then, visit St. Patrick's Cathedral, whose presence honors the patron saint of Ireland. When you ride through Dublin's elegant Georgian squares, remember to ask your guide about the colorful doors!

London

London has become one of the world's great melting pots while maintaining a distinct character that's all its own. From the London Bridge to the Houses of Parliament, Great Britain's royal tradition and rich history greet you at every turn. A local guide introduces you to Europe's largest city on your sightseeing tour. Admire architectural marvels like the Baroque domes and spires of St. Paul's Cathedral, the 17th-century church designed by Sir Christopher Wren. Check out the lively five-way intersection at Piccadilly Circus as well as Hyde Park's urban greenery. You may even get a chance to witness the ceremonial Changing of the Guard. Finally, snap a picture of Big Ben from the banks of the River Thames.



Tower Bridge | London, England

TRAVEL TRANSFORMS LIVES

EF is the World Leader in International Education

EF is the most reputable student travel organization, with nearly half a century of experience and schools and offices in more than 50 countries.

We always offer the lowest prices guaranteed because we believe in making travel possible for everyone. Now, with The EF Price Guarantee, once a student enrolls their price will never change.

We're fully accredited, just like your school. All of our educational itineraries feature experiential learning activities and visits to the best sites. Expert local guides add in-depth knowledge along the way.




We're completely committed to your safety. We have hundreds of offices around the world, so local EF staff members can react quickly and in person wherever you travel. Plus, parents can always reach us 24 hours a day at our headquarters.

Your full-time Tour Director is with your group every step of the way on tour, providing insight about your destinations as well as great local tips.

Online reviews from travelers. We ask every teacher, student and parent to review their EF tour experience. Reviews are online at eftours.com/reviews.

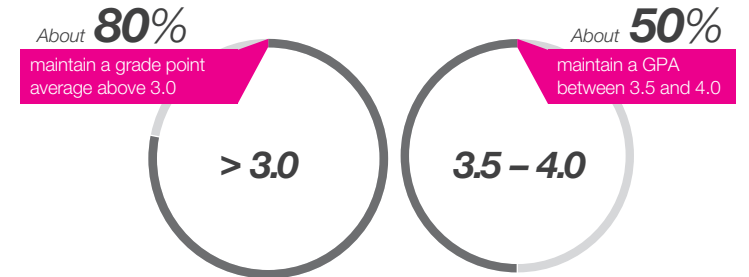
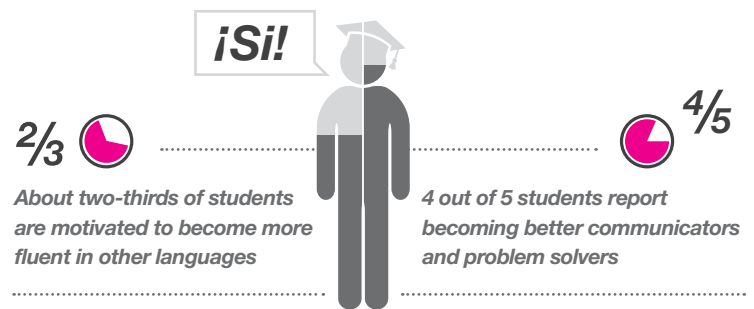
Sign up today

Ask your teacher for the tour number and choose your favorite way to enroll:

	Online: eftours.com/enroll
	Phone: 800-665-5364
	Mail your Enrollment Form to: EF Educational Tours One Education Street Cambridge, MA 02141

We prepare students for long-term success.

A nationwide survey conducted by AdvancED, an organization dedicated to education quality, asked thousands of students who had traveled with EF Educational Tours how the experience impacted them following high school. What we discovered is that traveling transforms students' lives—exactly what teachers and parents have been telling us all along.



Interact with us at eftours.com/connect or find us on:

